

A Climate Change Focused Organization

Jeff Mears

TSC Fall 2011 Meeting

Dec 6 – 8, 2011

Tulsa, OK

Environmental Area Manager

Oneida Tribal Member



Environmental, Health & Safety Division

P.O. Box 365 || Oneida, WI 54155 || 920.496.5330 || www.oneidationation.org/environment/

Latihwyatsya?nikó-lale?

They protect the earth

Overview

- Oneida
- Climate Change





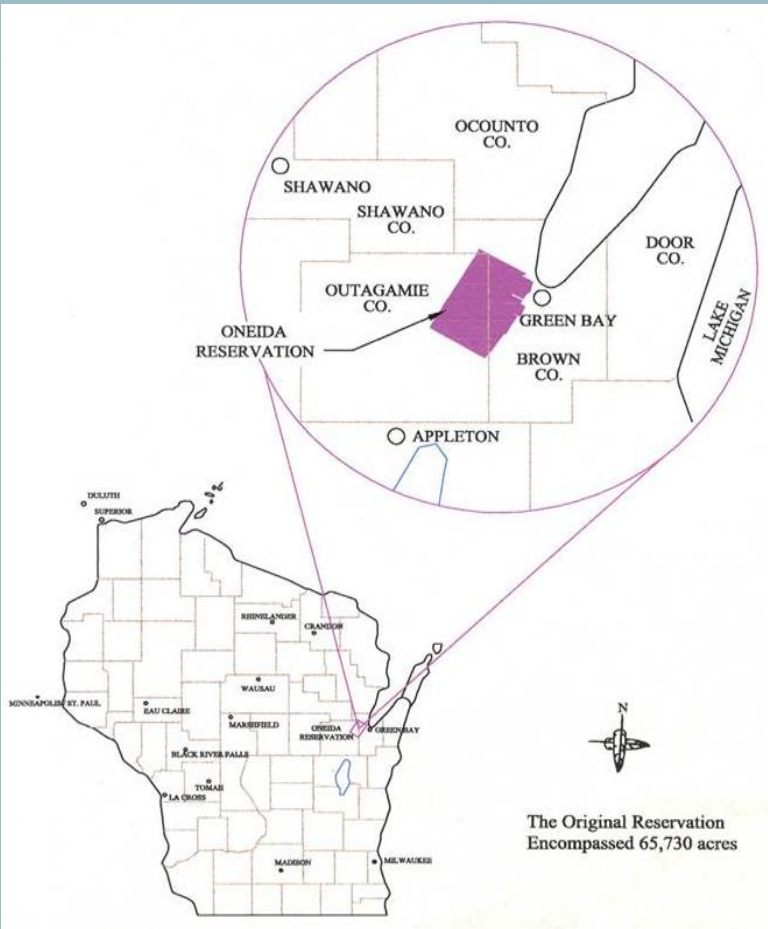
Oneida

Oneida Reservation is about 65,400 acres (approximately 100 square miles)

Tribe currently owns 37% of the land base

~16,000 members, 6200 tribal members live on or near the Reservation (2006)

Multi-jurisdictional issues-Counties, Cities, Villages, and Towns within the Reservation





Oneida



Environmental, Health & Safety Division

Latihwyatsya?nikú-lale?

P.O. Box 365 || Oneida, WI 54155 || 920.496.5330 || www.oneidationation.org/environment/

They protect the earth.



Oneida



Environmental, Health & Safety Division

Latihwya?tsya?nikú-lale?

P.O. Box 365 || Oneida, WI 54155 || 920.496.5330 || www.oneidationation.org/environment/ *They protect the earth.*



Oneida



- 1838 – Oneida Treaty
- 1848 – State of Wisconsin
- 1854 – Green Bay
- 1857 – Green Bay Police
- 1985 – Oneida Police Department
- 1985 – Federal Law Suit



Environmental, Health & Safety Division

P.O. Box 365 || Oneida, WI 54155 || 920.496.5330 || www.oneidanation.org/environment/

Latihwyatsya?nikú-lale?

They protect the earth.

Oneida

- Ruling
- Federal Grants
- 1988 – Indian Gaming Act
- 1994 - Casino



Environmental, Health & Safety Division

P.O. Box 365 || Oneida, WI 54155 || 920.496.5330 || www.oneidationation.org/environment/

Latihwyaʔtsyaʔnikó-laleʔ

They protect the earth.

Climate Change

- EPA Climate Change Website
- Intergovernmental Panel on Climate Change (IPCC)



Environmental, Health & Safety Division

P.O. Box 365 || Oneida, WI 54155 || 920.496.5330 || www.oneidanation.org/environment/

Latihwyltsya?nikó-lale?

They protect the earth.

Climate Change

- Climate change is long term, significant changes in temperature, precipitation, and wind. Global Warming is an increase in global average temperature. Global warming can drive climate change, the term climate change is preferred because it is more inclusive and descriptive





Climate Change

“Global Warming is Unequivocal”

Intergovernmental Panel on Climate Change
2007: Synthesis Report



Environmental, Health & Safety Division

P.O. Box 365 || Oneida, WI 54155 || 920.496.5330 || www.oneidationation.org/environment/

Latihwuyatsya?nikó-lale?

They protect the earth.

Federal

- *“...Not only is it real, it's here, and its effects are giving rise to a frighteningly new global phenomenon: the man-made natural disaster.”*
- - President Barack Obama, 2008



Climate Change - Wisconsin

- Hot Summers – 20 days above 97° F
 - More air conditioning
 - More ozone
 - More asthma attacks
 - 2003 European Heat Wave



WISCONSIN TRENDS & IMPACTS

Decrease:

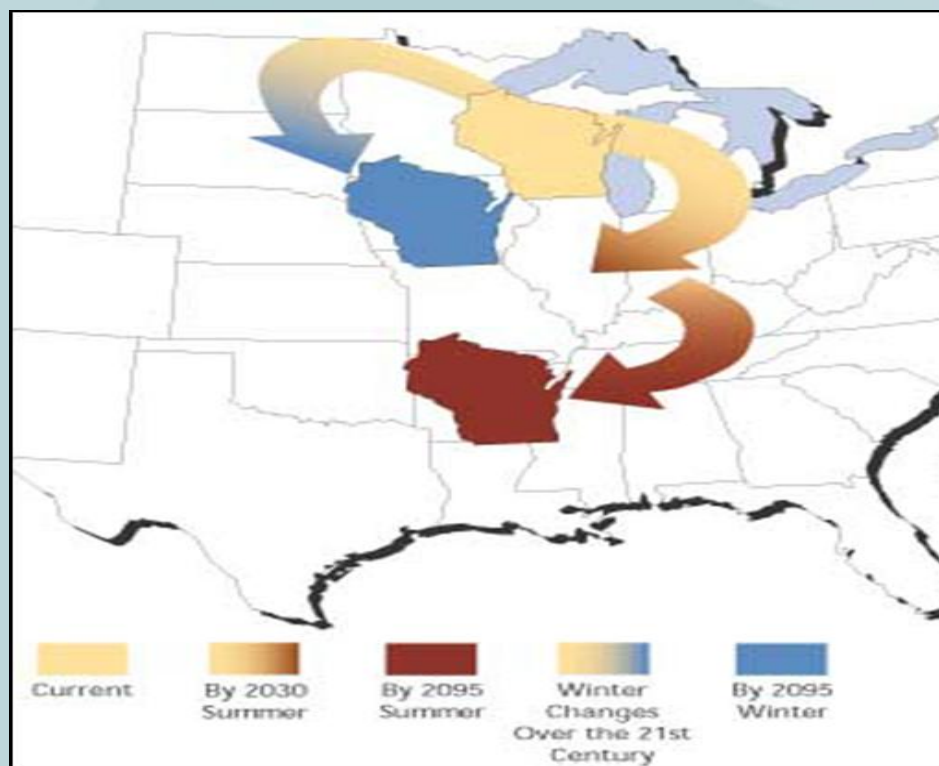
- Great Lakes water levels
- Native species

Increase:

- Algae blooms & beach closures
- Growing season
- Pests, pathogens & disease
- Extreme weather events
- Invasive species
- Water demands

Variable:

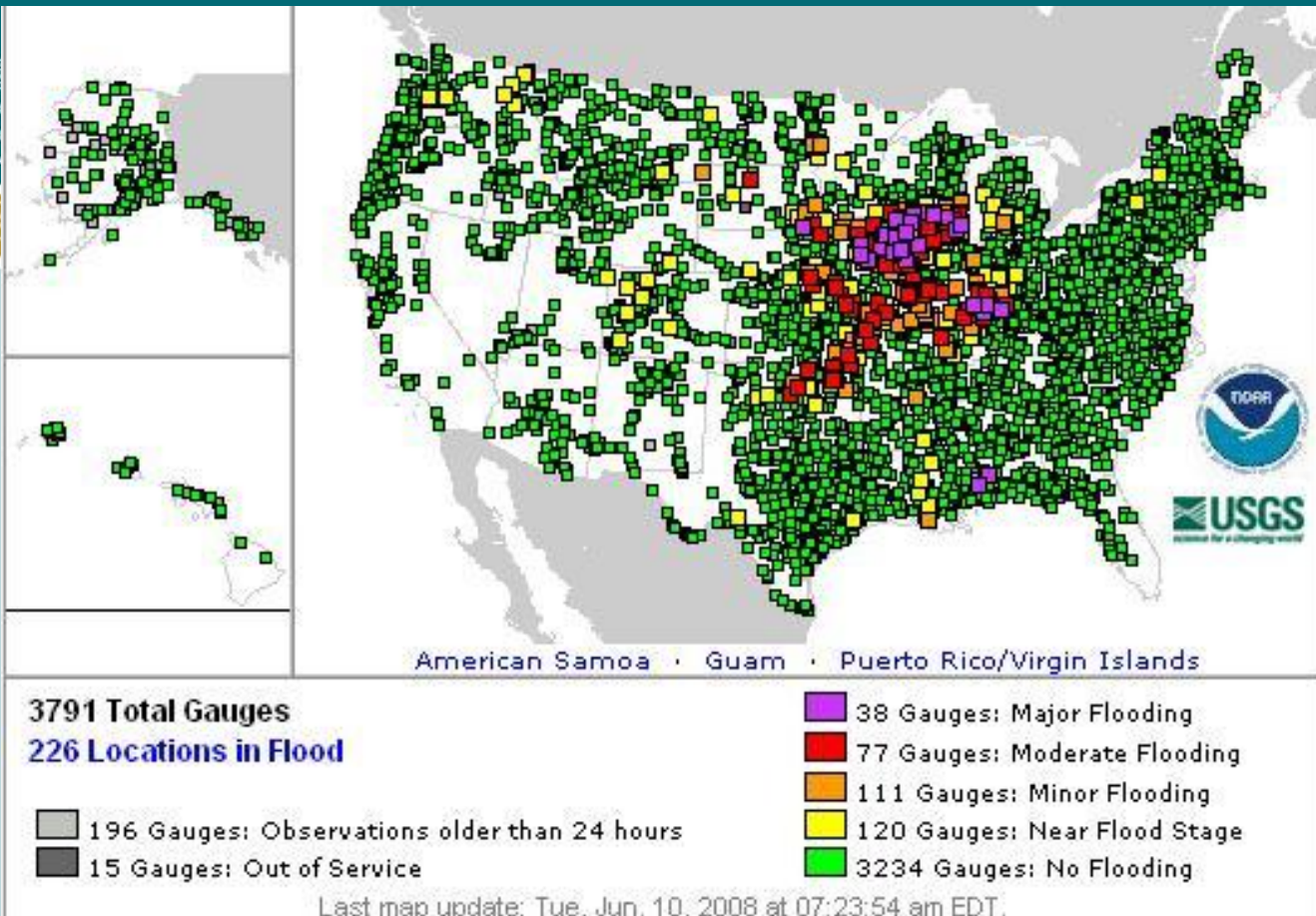
- Seasonal precipitation changes
- Creeks dry up for longer periods



Climate Change - Wisconsin

- Wet winters >15 – 30 %
- Dry summers < 20%
- Precipitation heavier storms
- Milwaukee 1993 – cryptosporidium outbreak 400,000 sick 54 died





Duration: June 7 - July 1

Fatalities: 13 Deaths

Damages: \$6 Billion+

Areas affected: Illinois, Indiana, Iowa, Missouri, Minnesota and Wisconsin



Environmental, Health & Safety Division

Latihwyltsyaʔnikó-laleʔ

P.O. Box 365 || Oneida, WI 54155 || 920.496.5330 || www.oneidationation.org/environment/

They protect the earth.

Climate Change - Wisconsin



Environmental, Health & Safety Division

P.O. Box 365 || Oneida, WI 54155 || 920.496.5330 || www.oneidationation.org/environment/

Latihwyałtsya?nikó-lale?

They protect the earth.



Environmental, Health & Safety Division

P.O. Box 365 || Oneida, WI 54155 || 920.496.5330 || www.oneidationation.org/environment/

Latihwyaʔtsyaʔnikó·laleʔ

They protect the earth

Climate Change – Human Health impacts

Asthma, Allergies, Airway Diseases

- Increased pollen – changes in growing season and precipitation

Cancer

- Chemical exposure from batteries, fuel cells

Cardiovascular Disease and Stroke

- Heat stress, PM, zoonotic vectors

Foodborne Diseases and Nutrition

- Shortages, contamination (ex. Seafood and water pollution)



Climate Change – Human Health impacts

Vectorborne and Zoonotic Diseases

- Changes in ranges (ticks, mosquitoes), incubation cycles, relocation of people

Waterborne Diseases

- Changes in water temperatures, precipitation, coastal ecosystem

Weather-Related Morbidity and Mortality

- Hurricanes, floods, droughts, wildfires, heat

Human Development Effects

- Decreased food supplies, exposure to toxic contaminants and biotoxins



Climate Change Focus

- Strategically align the organization
 - Every department will include climate change in budget requests and strategic planning.
 - No cost – use existing staff
- Balanced Scorecard model



Balance Scorecard



Environmental, Health & Safety Division

P.O. Box 365 || Oneida, WI 54155 || 920.496.5330 || www.oneidanation.org/environment/

Latihwyltsya?nikó-lale?

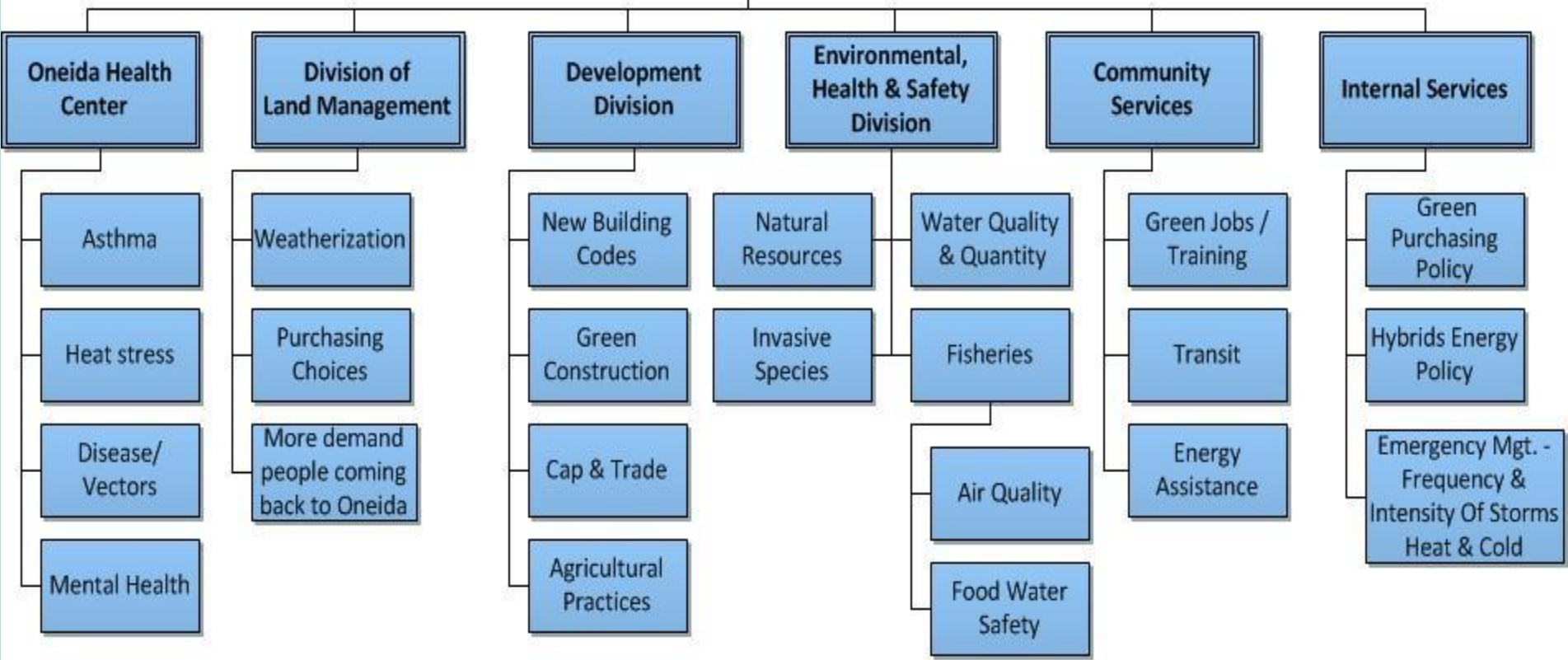
They protect the earth.

What this is not

- This is not about prevention, we need to adapt
- Not short term – fix and get back to normal
- New normal – adaptation and mitigation



Oneida Tribe of Indians



Staff Survey

- Responses 138 of 502
- 6 Divisions: EH&S, Development, DOLM, OHA, Health, and Governmental Services
- Do you agree CC is real? Do you think we can do anything?



Results

- 60% of respondents college or graduate degrees
- 70 % agree CC is real and man-made
- 75% say it's happening now or soon
- 81% say public policy and individuals can make a difference
- 65% of the respondents were female



Summary

- Climate Change is about adaptation
- Federal, State, and Local governments vs Tribal governments
- Cultural
- Historical



- “If we do not protect Mother Earth, our children will have nothing. When we die, we want to know that we did everything we could to protect their legacy.” - Phil Shapoddock, the Potawatomi Chairman December 2008



**Cleaner Air
Efficient Heat
Safer Home**

Replace Your Old Woodstove!

Protect tribal community and indoor air quality, create a warmer and safer home, and reduce the amount of money spent on home heating bills. For information on cleaner wood burning and the changeout of old woodstoves, go to www.epa.gov/woodstoves or www.woodstovechangeout.org.

